

# DRUG-FREE WORKPLACE ADVISOR

AN ONGOING SERIES TO PROTECT YOUR COMPANY BY HELPING TO KEEP DRUGS OUT OF YOUR WORKPLACE.

### INSIDE THIS ISSUE:

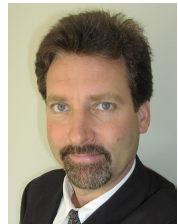
<i>Drug users employed</i>	1
<i>Kids consuming more...</i>	1
<i>Drug abuse signs</i>	1
<i>Why be concerned?</i>	2
<i>Giant Cement Case Study</i>	2
<i>Who is American Drug?</i>	2
<i>Improve your profits...</i>	2

### Key Drug Abuse Warning Signs:

- Weight changes, drastic loss or gain
- Nervous, agitated, trouble sitting still
- Frequent trips to restroom
- Runny nose, congestion, more susceptible to infections
- Easily upset, emotional state changes rapidly

### The Drug-Free Workplace Advisor

is a resource of American Drug Testing., the low-country's premier drug-free workplace administrator, and testing company. Let us help you maintain a drug-free workplace. Contact us at 843-747-4111.



Robert B. Dodenhoff  
President

## Survey: Vast Majority of Drug Users Are Employed

The 2002 National Survey on Drug Use and Health (NSDUH) recently released by the Substance Abuse and Mental Health Services Administration (SAMHSA) provides current national estimates of rates of use, number of users and other measures related to illicit drugs and alcohol, generally and for different populations, including workers.

The study's findings indicate that the vast majority of drug users work. Of the 16.6 million illicit drug users aged 18 or older in 2002, 12.4 million (74.6 percent) were employed either full or part time. In addition, most individuals classified with substance dependence or abuse were employed either full or part time.



Port cities like Charleston are especially susceptible to illegal drug traffic

Rates of current alcohol use were 61.8 percent for full-time employed adults aged 18 or older in 2002. Furthermore, the majority of the nation's adult binge and heavy drinkers were employed. Of the 51.1 million adult binge drinkers in 2002, 40.8 million

(80 percent) were employed either full or part time. Similarly, 12 million (79 percent) of the 15.2 million adult heavy drinkers were employed.

Analysis of data collected in previous years shed

*(Continued on page 2)*

## Kids Are Consuming More Alcohol, Cigarettes, Cocaine

The Center for Disease Control's latest annual survey of "youth risk behavior," and the findings reveal a youth population still eager to experiment with alcohol, cigarettes and illicit drugs, but more likely to buckle up behind

the wheel. The survey found that almost one out of ten high school students had used cocaine and 4.2% had used within the past



30 days, marking a dramatic increase in high school cocaine use over the past decade. Heroin, methamphetamine, steroid and injection drug usage also rose, while marijuana use decreased

*(Continued on page 2)*

**Terry Kinder, President & CEO. Giant Cement Corporation**

With nearly 900 employees in 12 facilities in 6 states, establishing and maintaining a company-wide drug-free workplace is an ongoing challenge. American Drug Testing has been an excellent partner in helping us to accomplish this. In particular, they helped us to uncover, and then eliminate potentially disastrous drug problems at several of our operating facilities.



**DRUG USERS EMPLOYED**

*(Continued from page 1)*  
light on the impact these individuals' drug use has on the nation's workplaces. In 2000, workers reporting past month drug use were more likely than those who did not to have worked for more than

three employers in the past year, missed work more than two days in the past month due to illness or injury, and skipped work more than two days in the past month.

Employers can protect their businesses from these negative affects by developing drug-free workplace programs that educate employees about the dangers of alcohol and drug abuse and encourage individuals with related problems to

seek help. The U.S. Department of Labor's Working Partners for an Alcohol- and Drug-Free Workplace program provides resources and tools to help employers establish and maintain such programs.

The NSDUH is an annual survey of civilian, non-institutionalized population of the U.S. aged 12 years or older and is the primary source of statistical information on substance use and abuse by the U.S. population.



Drug abusers are 1/3 less productive, using twice as much sick leave.

*"workers reporting past month drug use were more likely than those who did not to have worked for more than three employers in the past year..."*

**KIDS CONSUMING MORE ALCOHOL, CIGARETTES, COCAINE**

*(Continued from page 1)*  
slightly since last year. On the other hand, the report found that students were wearing seat belts more often, riding with a driver who had consumed alcohol less often and carrying weapons less often. The trade-off between increased high school drug use and de-

creased levels of violent or reckless behavior could save teenage lives. The CDC identified the four most likely causes of death for those aged 10 to 25 years of age as motor-vehicle crashes, other intentional injuries, homicide and suicide. Though suicide rates remain steady, the increase in

seat-belt use and decrease in riding with a drunk driver are likely to reduce fatalities due to motor-vehicle crashes.



**American Drug Testing**

... is the Lowcountry's oldest Drug Testing Company, helping companies to maintain drug-free workplaces for more than 13 years. Let us help you eliminate drugs (and their terrible consequences) from your workplace. Call us at 843-747-4111, or 843-549-4357. Six locations in Charleston, plus Walterboro, and serving all 50 states.



**WHY BE CONCERNED ABOUT EMPLOYEE DRUG USE?**

**Drug Abusers Are:**

- 3.6 times more likely to injure themselves or co-workers...
- 1/3 less productive, using twice as much sick leave
- 5 times more likely to

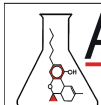
file a workers compensation claim...

- Filing 10 times as many grievances
- Disciplined 10 times more often costing you time, trouble and money...

**Increase your Bottom Line With our Drug-Free Workplace Program:**

Save 5-7% on workman's compensation premiums Reduce accidents, absenteeism, theft & liability.

Enjoy a more productive workforce.



**American Drug Testing**

*Drug-Free Workplace Programs*

**(843) 747-4111**